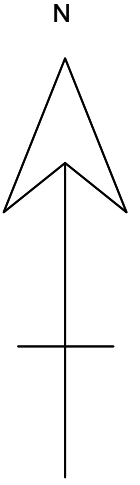


# ALUVA MAHADEVAR DEVASWOM IN PARUR GROUP PROPOSED SITE PLAN OF BALITHARAS FOR MAHASIVARATHRY FESTIVAL IN 1197 ME



SIZE OF BALITHARA 2.4X6.00 M  
SIZE OF PATHWAY BETWEEN  
BALITHARAS  
0.75 M WIDE

Actual curves are not considered in the plan  
All dimensions are in meters

